

*Seascape*  
*is here*

A ZEN EXPERIENCE  
AND A PRIVATE RESORT  
OF ITS OWN...




**OCEAN REEF**

Island Residences

PANAMA



A woman with dark hair is floating on her back in a swimming pool. Her eyes are closed, and she has a serene expression. She is wearing a white one-piece swimsuit. The water is a vibrant blue with ripples and reflections of light. In the background, the white edge of the pool is visible. A semi-transparent teal box with white text is positioned on the left side of the image.

A PLACE TO DISCONNECT,  
A PLACE OF NO-MIND,  
A PLACE TO EXPERIENCE  
INNER STILLNESS...



An aerial architectural rendering of a modern coastal resort. The main building is a long, curved structure with multiple floors, each featuring a balcony with glass railings. It is situated on a peninsula with a rocky shoreline. To the left of the building is a swimming pool with lounge chairs and palm trees. To the right is a marina with several yachts docked. The background shows a city skyline with palm trees and buildings under a warm, golden light. A large yacht is moving through the water in the foreground, leaving a wake.

YOUR OWN PRIVATE *sanctuary,*  
YOUR REFUGEE FROM THE CITY.



A PLACE TO KEEP YOU BALANCED,  
A PLACE TO BREATHE FRESH AIR,  
A PLACE TO CONNECT WITH NATURE,  
A PLACE TO LOSE PERSPECTIVE OF THE EVERYDAY...





# Location

SEASCAPE IS LOCATED IN LOTS 30, 31, 32 AND 33 OF ISLAND II OF THE OCEAN REEF PROJECT. ENCOMPASSING A WIDE SPECTRUM OF ACTIVITIES, OCEAN REEF ISLANDS IS MINUTES AWAY FROM PREMIER SHOPPING, EXCITING NIGHTLIFE, FINE DINING, SPECTACULAR SCUBA DIVING, UNMATCHED DEEP SEA FISHING AND WORLD CLASS SPA AND HEALTH SERVICES, YET LIES IN A SHELTERED HAVEN OF TRANQUILITY AND BEAUTY.







*Residences*



THE PROJECT FEATURES 2 AND 3 BEDROOM OCEANFRONT  
RESIDENCES DESIGNED BY THE PRESTIGIOUS  
ARCHITECTURAL FIRM MALLOL.

Mallol



3 BEDROOMS - 2,689 SQ FT.





2 BEDROOMS - 1,680 SQ FT.





Amenities





POOL AREA WITH BEACHFRONT ACCESS



BEACH WITH HAMMOCKS AND RELAXATION AREA



GYM AND TREATMENT ROOM



LAP POOL

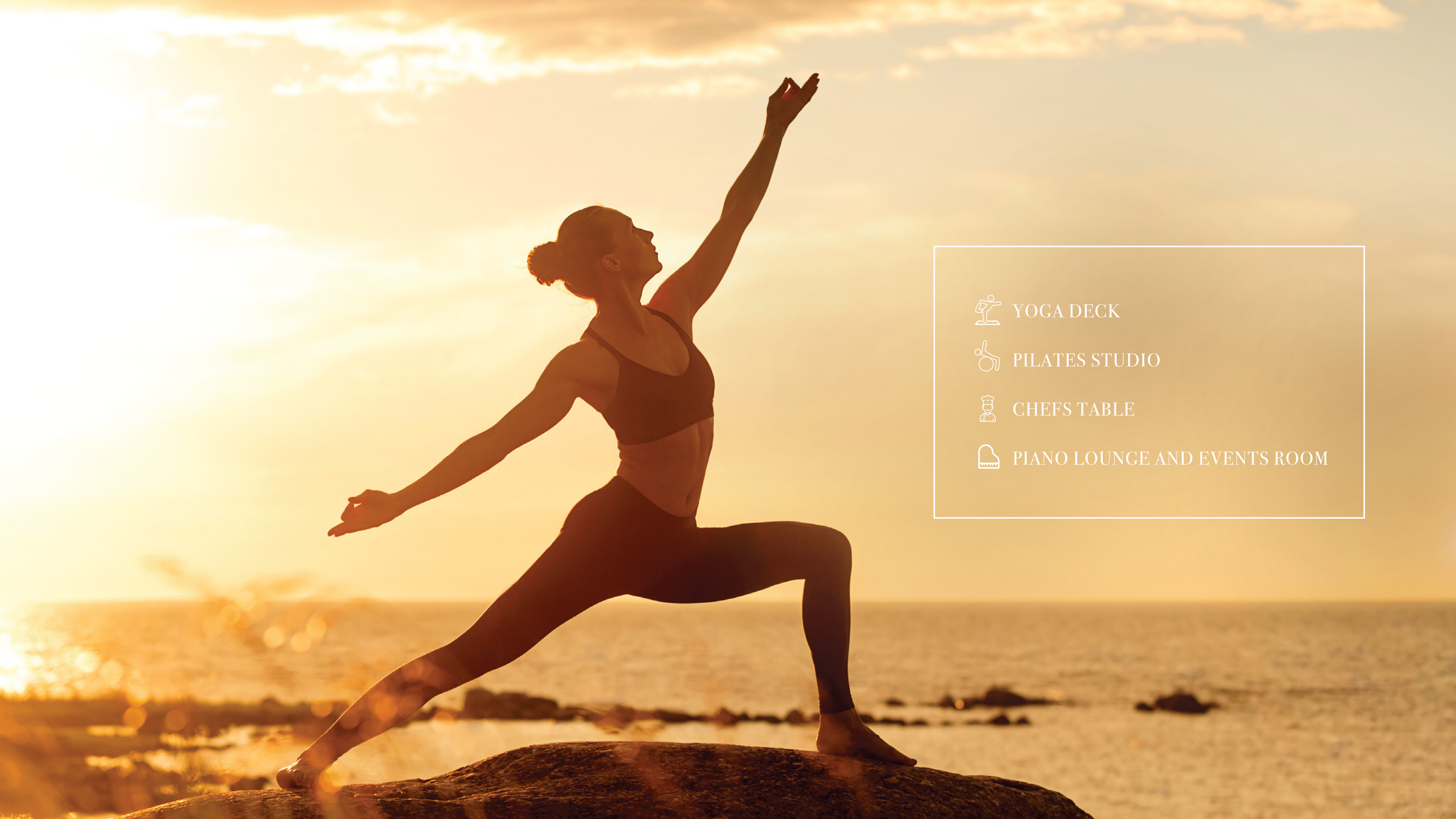


WHIRLPOOL



OUTDOOR YOGA STUDIO





YOGA DECK



PILATES STUDIO



CHEFS TABLE



PIANO LOUNGE AND EVENTS ROOM





PRIVATE WINE CELLAR



CONCIERGE AND WELLNESS SERVICES





SHARED WORKING SPACE



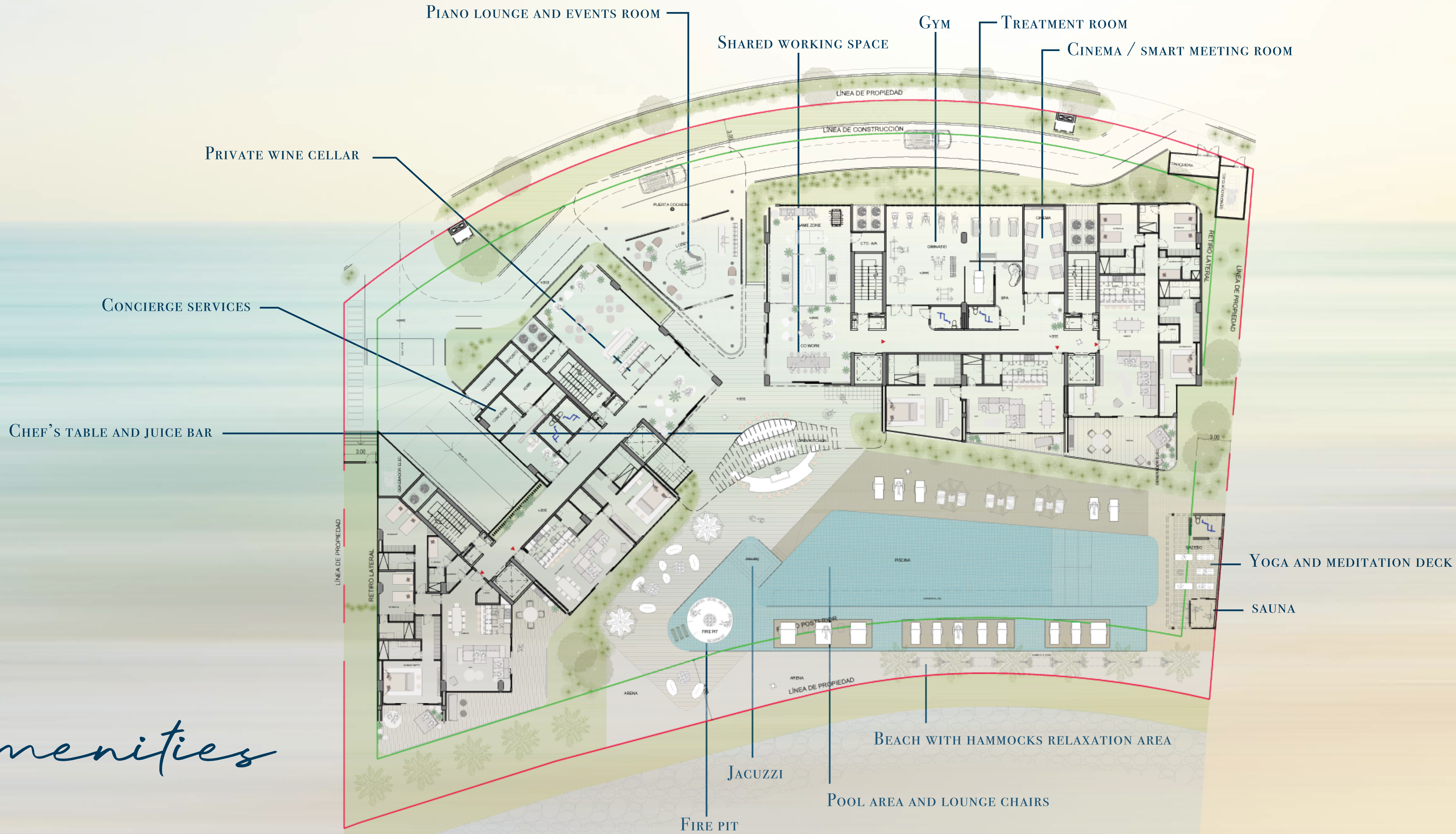
CINEMA / SMART MEETING ROOM



PIANO LOUNGE AND EVENTS ROOM



# Amenities





*A la Carte*  
*services upon*  
*request*  
USER PAY





IN-RESIDENCE DINING AND  
*event catering*



IN-RESIDENCE  
*spa services*



IN-RESIDENCES LAUNDRY &  
*dry cleaning*





HOUSEKEEPING



IN-RESIDENCES  
*gardening services*

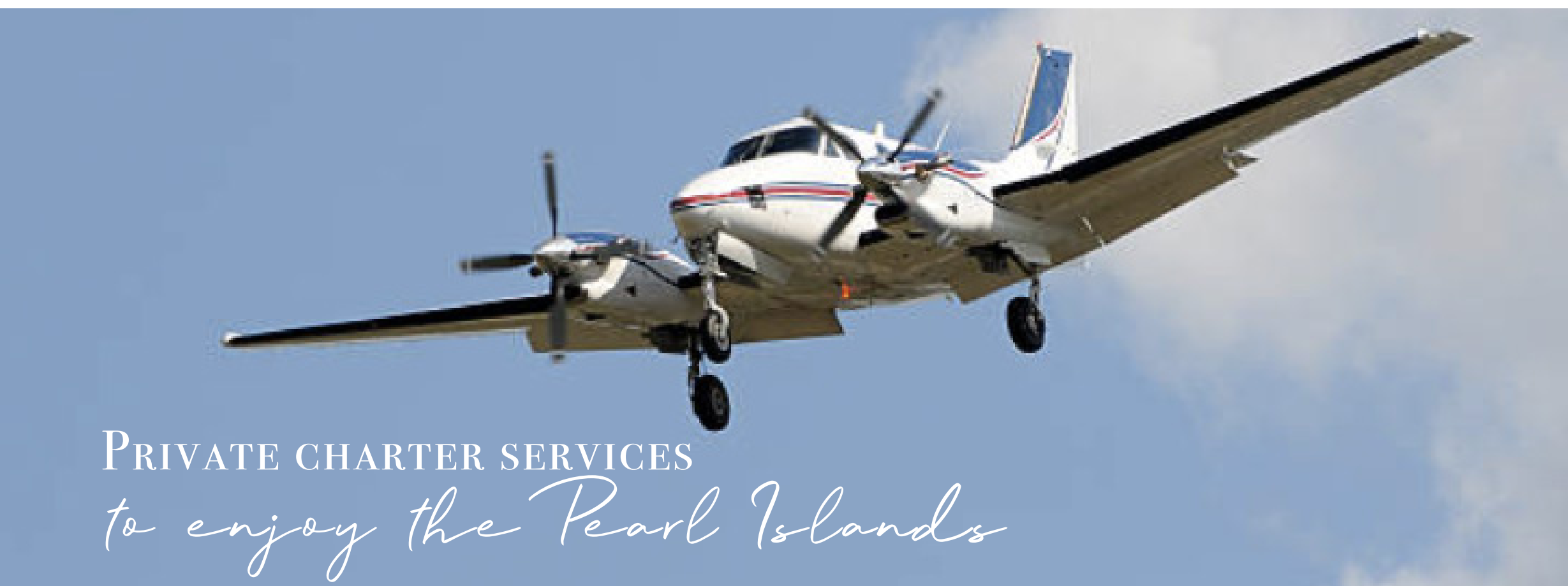


HELICOPTER  
*arrangements*





RESIDENCE MAINTENANCE AND  
*repair services*



PRIVATE CHARTER SERVICES  
*to enjoy the Pearl Islands*



GROCERY  
*provisioning*

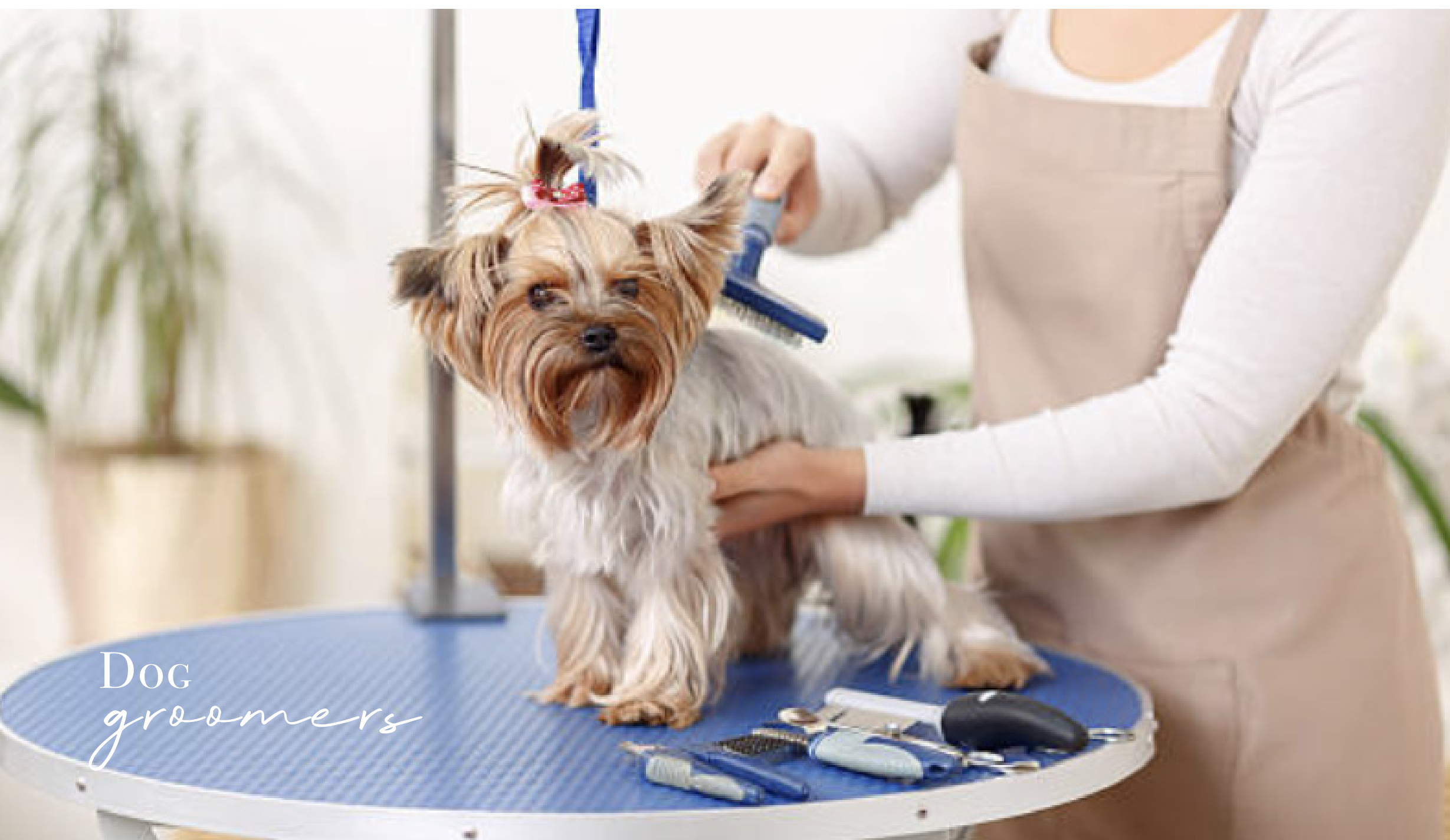


BOAT  
*charter*

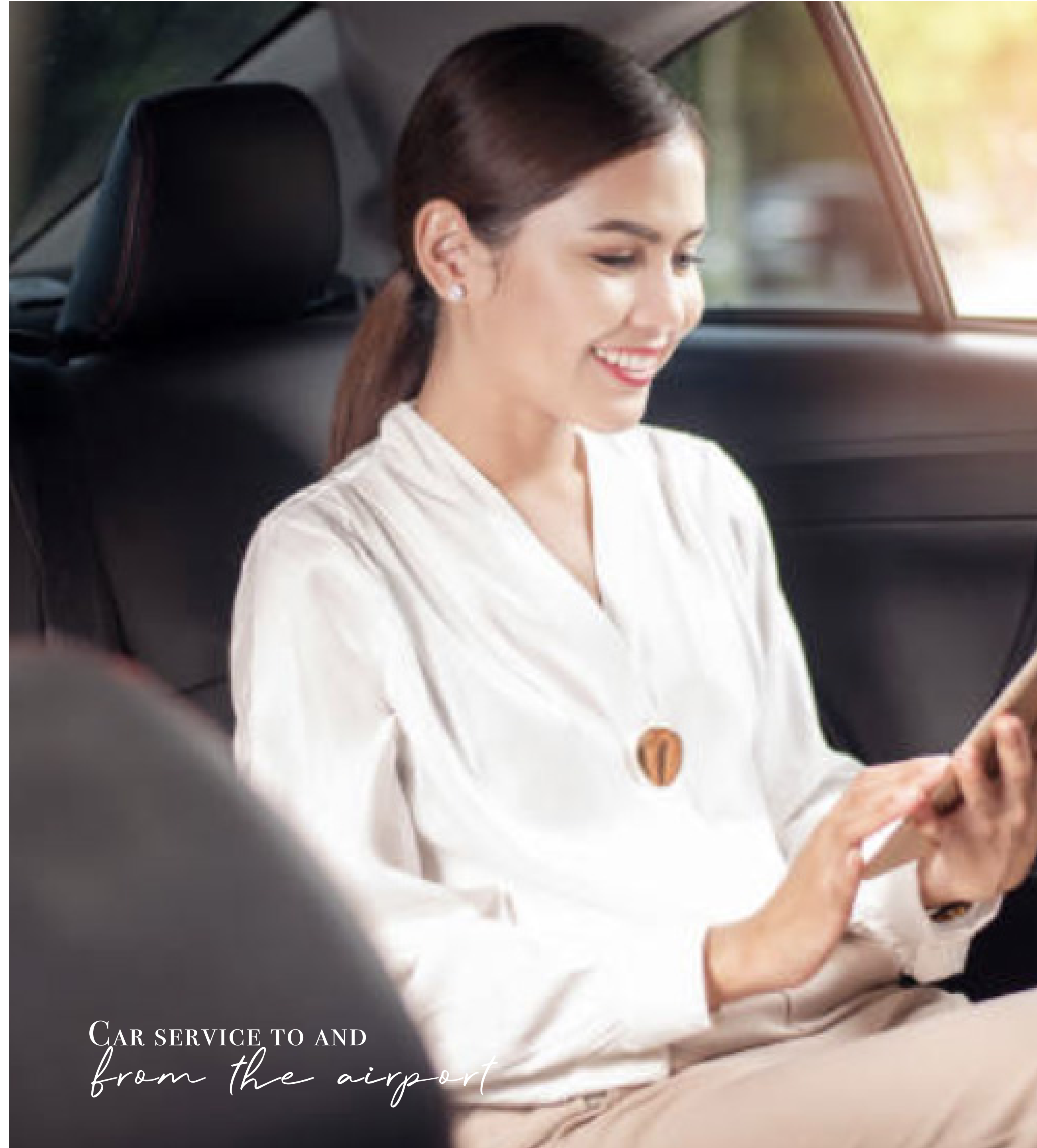




PERSONAL  
*trainers*



Doc  
*groomers*



CAR SERVICE TO AND  
*from the airport*



*Disconnect*  
TO CONNECT







# Ocean Reef





OCEAN REEF ISLANDS IS THE **FIRST AND ONLY MAN BUILT ISLAND IN THE PACIFIC OCEAN.** RESIDENTS ENJOY AN ISLAND LIFESTYLE, ONLY MINUTES FROM THE HEART OF PANAMA CITY, THE ECONOMIC AND CULTURAL HUB OF THE REGION.

A COMPLETELY DIFFERENT ECOSYSTEM WITH LOW DENSITY AND ONE-OF-A-KIND PRIVATE RESIDENCES, IT’S UNLIKE WHAT YOU EXPERIENCE ANYWHERE ELSE IN LATIN AMERICA.

A WORLD CLASS MARINA JUST STEPS AWAY FROM THE CITY, WHICH WILL OFFER 200 SLIPS FOR YACHTS RANGING FROM 40 TO 200 FEET. A MARINE AND BOAT SUPPLY STORE, FUELING STATION, SLIP RENTAL PROGRAM, SCUBA DIVING TRIPS, AND YACHT CHARTER SERVICE WILL BE AVAILABLE AT THE YACHT CLUB. THE MARINA IS UNDER CONSTRUCTION AND WILL OPEN LAST SEMESTER OF 2019.



OCEAN REEF ISLANDS IS THE JEWEL OF PUNTA PACIFICA, THE MOST AFFLUENT NEIGHBORHOOD IN PANAMA CITY. CONNECTED TO THE MAINLAND BY A BRIDGE OF APPROX. 160 METERS AND OFFERS THE POSSIBILITY OF BEING AWAY BUT ALWAYS CONNECTED IF YOU WISH.

IT HAS A PRIVILEGED LOCATION SINCE IT IS CONNECTED THE MOST IMPORTANT AREAS OF THE CITY WITH A DIRECT ENTRY AND EXIT FROM THE SOUTH CORRIDOR AND MULTIPLE ACCESS ROADS, JUST 5 MINUTES FROM SUPERMARKETS, SHOPPING CENTERS, RESTAURANTS, HOSPITALS, BANKING CENTER AND BUSINESS.

OCEAN REEF ISLANDS IS THE PREFERRED MARINA FOR YACHTS IN PANAMA BECAUSE OF ITS PROXIMITY TO THE CITY AND THE MOST SPECTACULAR BEACHES OF THE PACIFIC OCEAN. LESS THAN 30 NAUTICAL MILES FROM OCEAN REEF ISLANDS YOU CAN FIND EXCELLENT FISHING AND THE PRISTINE WATERS OF THE ARCHIPELAGO LAS PERLAS.





 PRIVATE RESIDENTIAL MARINA

 YACHT CLUB

 POOL AREA

 RESTAURANT

 BAR AND LOUNGE

 BARBECUE AREA

 GYM

 WATER SPORTS CENTRE

 CONVENIENCE STORE

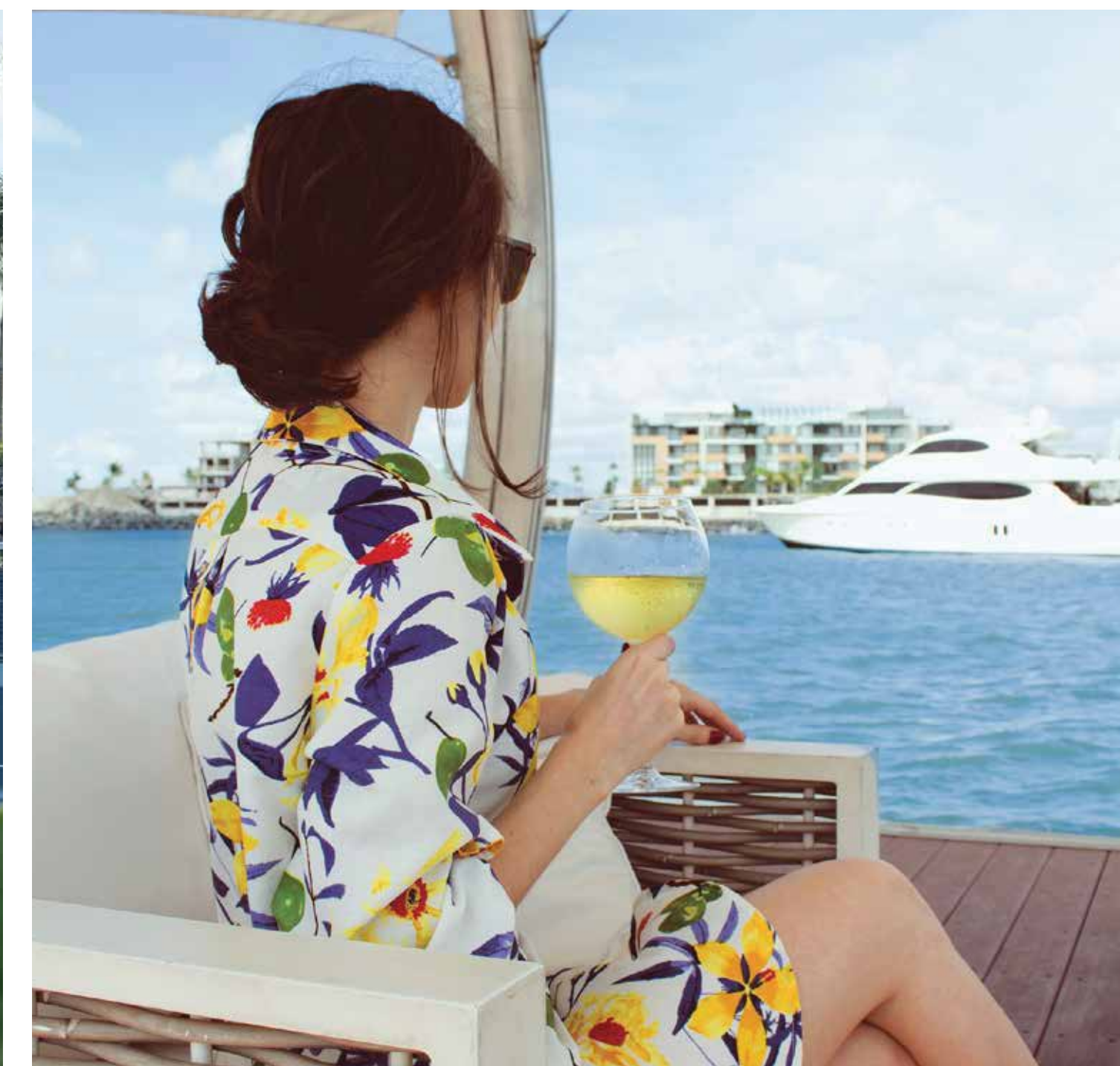
 KID'S PLAY AREA

 PARKS AND URBAN CENTER

 TENNIS COURT

 MULTIPURPOSE COURT (BASKETBALL,  
VOLLEYBALL, SOCCER AND OTHER)

 PADDLE TENNIS COURT





# WHY OWN A HOME IN OCEAN REEF ISLANDS. WHAT'S MAKES IT SO *Special*?

## ITS GEOGRAPHICAL POSITION



THE ONLY PRIVATE ISLANDS LOCATED IN THE CENTER OF PANAMA'S BAY, ONLY STEPS AWAY FROM THE HEART OF THE CITY AND SURROUNDED BY THE BEST HOSPITALS, RESTAURANTS, MALLS AMONG OTHERS.

## FOR THE QUALITY OF LIFE



NO ONE IN PANAMA CITY LIVES LIKE THIS, LIVING IN THE BEACH WITH THE OCEAN AT YOUR FEET EVERY DAY OF THE WEEK. THIS IS ANOTHER WORLD, A COMPLETELY DIFFERENT ECOSYSTEM WHERE YOU LOOK AT THE CITY FROM ANOTHER ANGLE, WHERE YOU CAN'T LISTEN OR FEEL IT... WHERE YOU BREATHE FRESH AIR, LISTENING TO THE SOUND OF THE SEA AND THE BIRDS THAT SURROUND IT.

## FOR ITS EXCLUSIVITY



ALL OF THE PROPERTIES IN FRONT OF THE OCEAN IN PANAMA ARE HIGH DENSITY PROPERTIES WITHOUT ACCESS TO THE SEA. THIS IS THE ONLY PROJECT, NOT ONLY IN PANAMA BUT IN CENTRAL AMERICA THAT OFFERS THE POSSIBILITY OF HAVING A HOUSE OR A PRIVATE PROJECT OF LOW DENSITY AMONG FRIENDS, FACING THE SEA AND HAVING THE POSSIBILITY OF HAVING A PRIVATE PIER IN FRONT OF YOUR RESIDENCE.

## FOR ITS AMENITIES



IT OFFERS A NUMBER OF AMENITIES WITHIN WHICH WE CAN MENTION A TENNIS COURT, MULTIPURPOSE COURT, SQUASH COURT, PADDLE TENNIS COURT, PLAYGROUND, CENTRAL URBAN CONCEPT, HELIPORTS, AMONG OTHERS... THE MOST IMPORTANT ADDED VALUE FROM OCEAN REEF MARINA, A PRIVATE RESIDENTIAL MARINA LOCATED IN THE CENTER OF THIS SPECIAL DEVELOPMENT, MAKING IT THE ONLY MARINA IN DOWNTOWN PANAMA CITY FOR THE EXCLUSIVE USE OF ITS OWNERS AND MEMBERS. BECAUSE IT IS UNIQUE, THERE IS NO SIMILAR PROJECT COMPARABLE IN THE WHOLE OF CENTRAL AMERICA, SO WHAT HAS BEEN LIMITED AND IN TURN GUARANTEES EXCLUSIVITY AND THEREFORE AN IMPORTANT APPRECIATION.



IT IS THE ONLY PROJECT THAT OFFERS ITS OWNERS THE POSSIBILITY TO **CUSTOMIZE THEIR RESIDENCES** ON THE BASIS OF THEIR NEEDS.





JW MARRIOTT

F&F TOWER

PUNTA PACÍFICA

PUNTA PAITILLA

MULTIPLAZA

ATLAPA CONVENTION  
CENTER

ISLA OESTE

AVE. BALBOA

COSTA DEL ESTE

ISLA ESTE





AGENDA UNA CITA CON NOSOTROS PARA MÁS DETALLES

INFO@OCEANREEFISLANDS.COM

C. 6218-2020

📷 @OCEANREEFISLANDS

WWW.OCEANREEFISLANDS.COM