



OCEAN REEF

Island Residences

PANAMA

P.H. Waterfront 40

Limited Luxury Oceanfront Residences

Único Pent House disponible para entrega en 2020.

3 recámaras. 320 m².





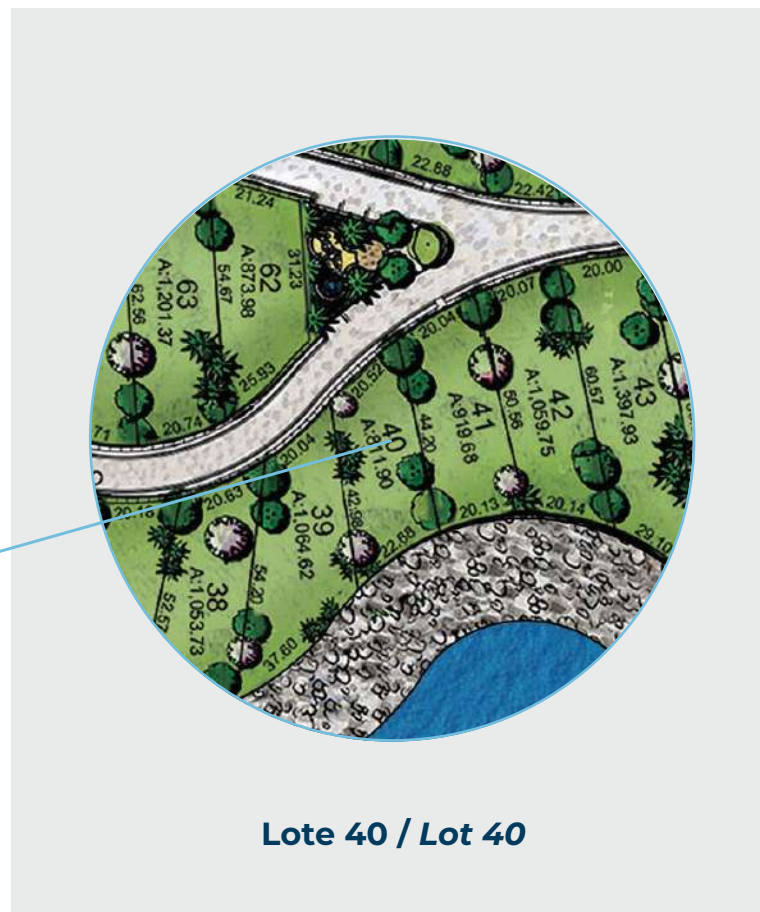
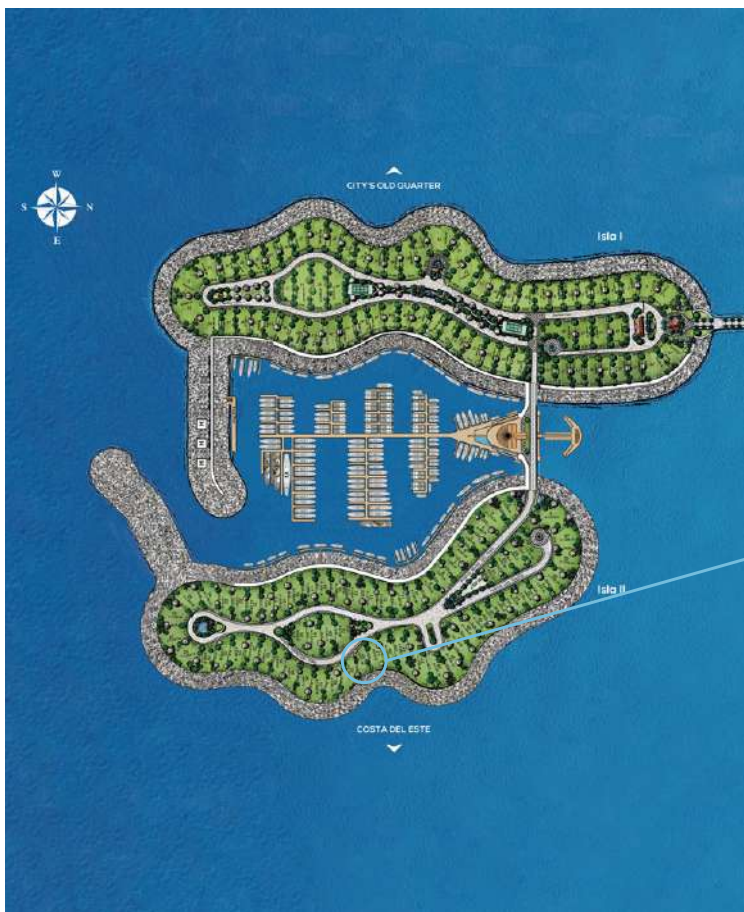
P.H. Waterfront 40

Está ubicado en el lote 40 de la Isla II. **1 unidad disponible.**

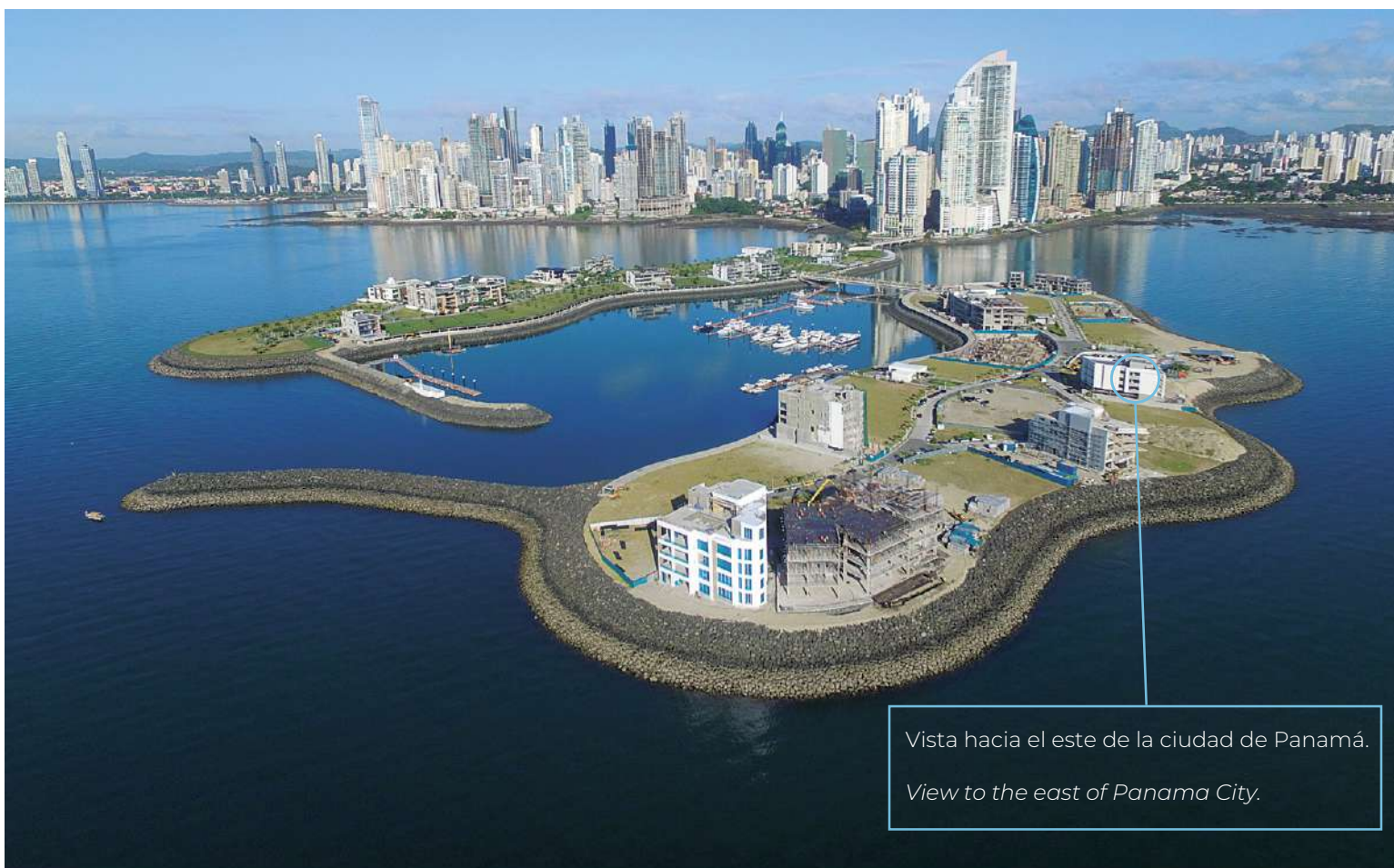
Is located in lot 40, Island II. **1 available.**



Ubicación / Location



Lote 40 / Lot 40



Vista hacia el este de la ciudad de Panamá.
View to the east of Panama City.

Nivel 300 / Level 300

Vista al mar - Ocean view

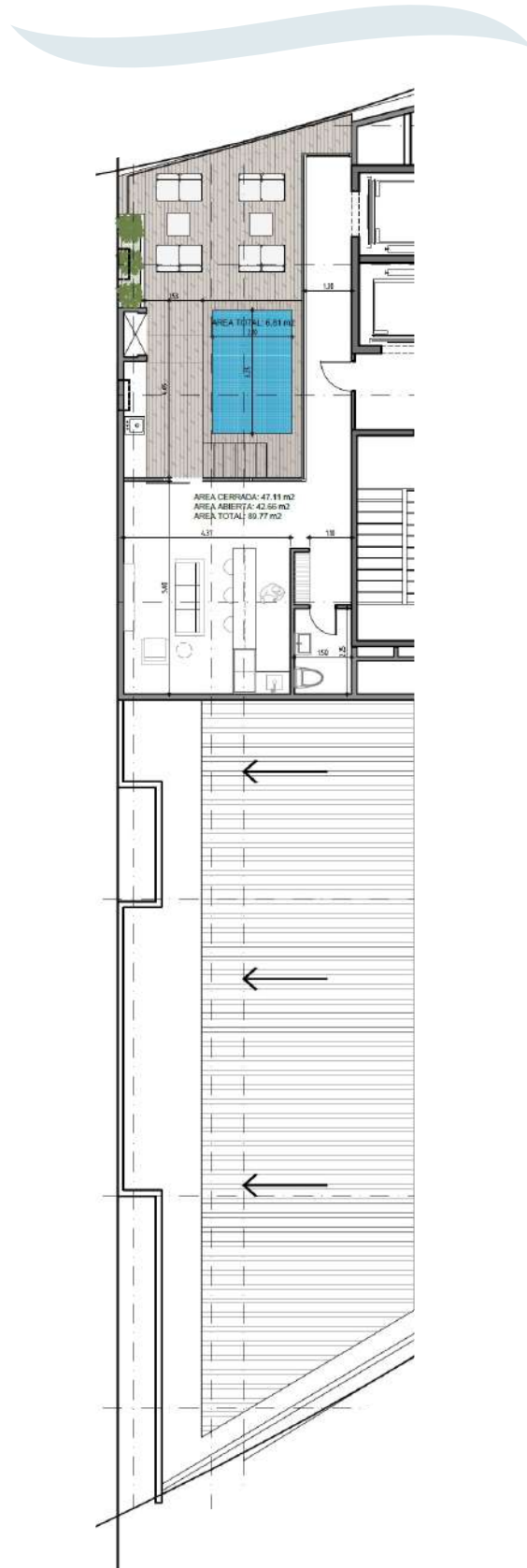


- Área cerrada: 208.94 m² / 2,249.01 sq. ft.
- Área abierta: 15.36 m² / 165.33 sq. ft.
- **Área total: 224.30 m² / 2,414.34 sq. ft.**

- Closed area: 208.94 m² / 2,249.01 sq. ft.
- Open area: 15.36 m² / 165.33 sq. ft.
- **Total area: 224.30 m² / 2,414.34 sq. ft.**

Nivel 400 / Level 400

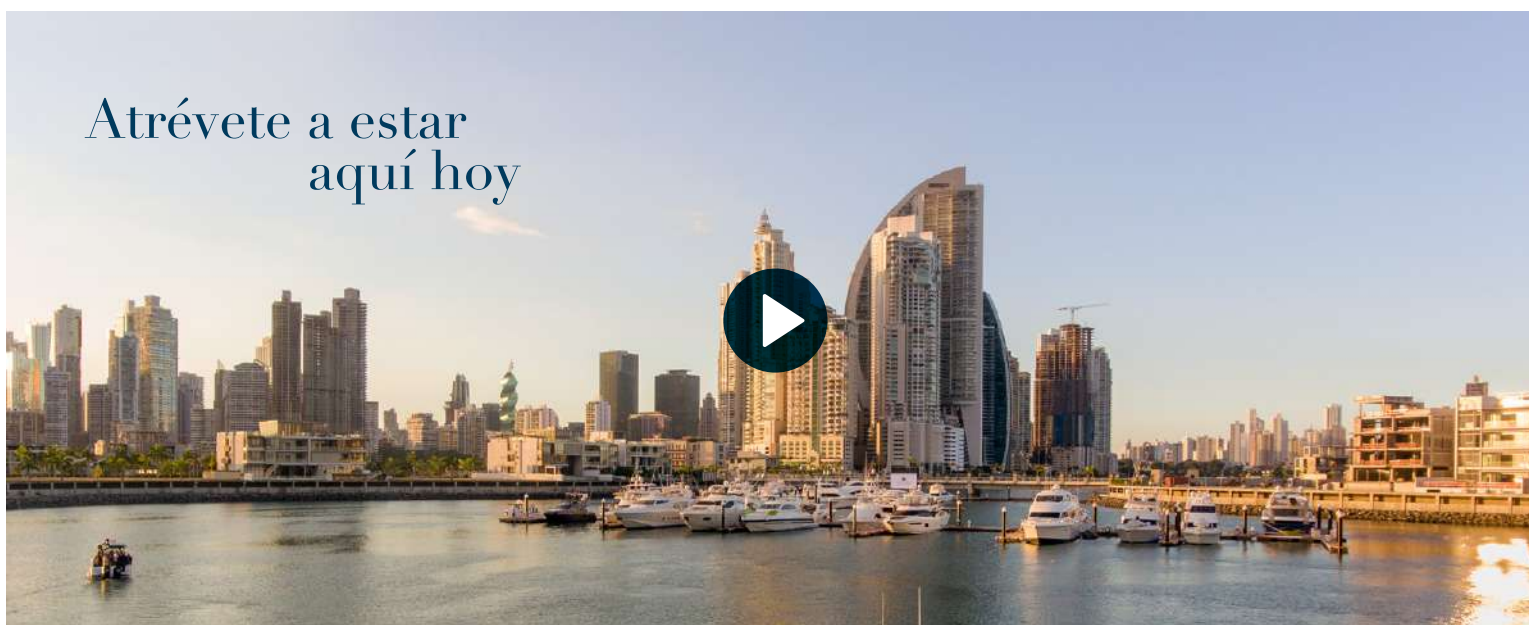
Vista al mar - Ocean view



- Área cerrada: 25 m² / 269.09 sq. ft.
- Área abierta: 40 m² / 430.55 sq. ft.
- **Área total: 65 m² / 699.65 sq. ft.**

- Closed area: 25 m² / 269.09 sq. ft.
- Open area: 40 m² / 430.55 sq. ft.
- **Total area: 65 m² / 699.65 sq. ft.**

Atrévete a estar
aquí hoy



Info@oceanreefislands.com
207.8808 / 6218.2020
www.oceanreefislands.com

