



OCEAN REEF

Island Residences

PANAMA

P.H. Waterfront 8





P.H. Waterfront 8

PH privado para 5 familias exclusivamente, con su area social y acceso a la marina. Está ubicado en el lote 8 de la Isla II. **2 unidades disponibles.**

Private PH for 5 families exclusively, with its social area and access to the marina. Is located in lot 8, Island II. **2 available.**



Ubicación / Location



Lote 8 / Lot 8

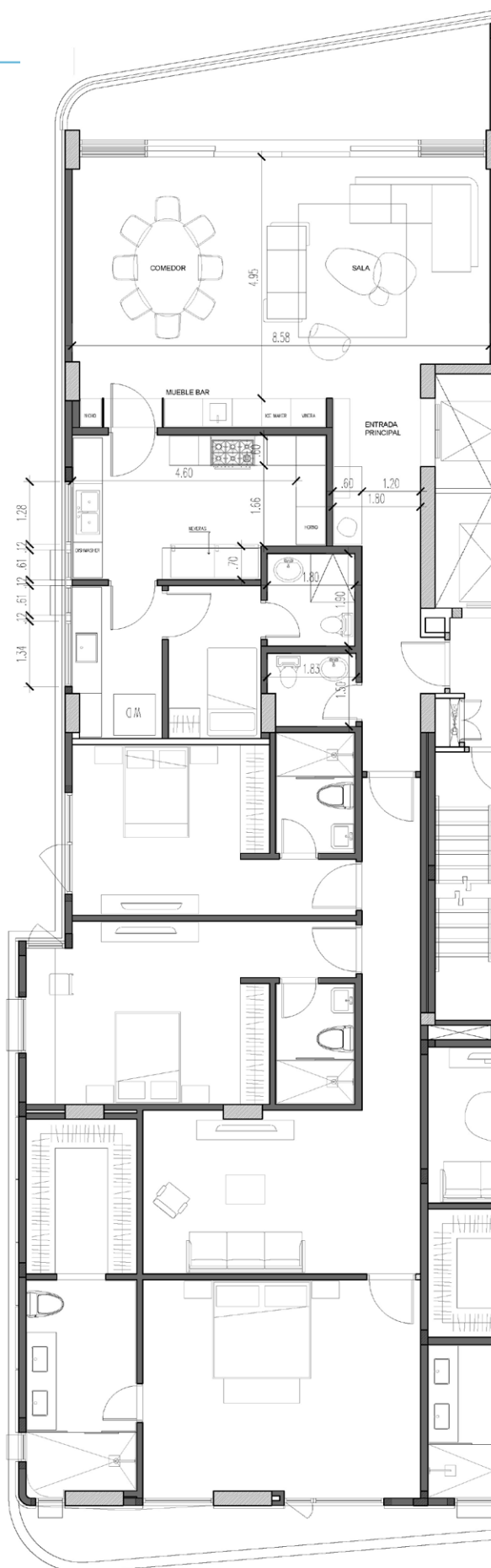


Vista hacia el sur de la ciudad de Panamá.
View to the south of Panama City.

Apt. 1 - s

Opción 1 / Option 1

Cocina cerrada / Closed kitchen



• Área cerrada: 242 m² / 2,604.87 sq. ft.

• Área abierta: 21.88 m² / 235.51 sq. ft.

• **Área total: 263.88 m² / 2,840.38 sq. ft.**

• Closed area: 242 m² / 2,604.87 sq. ft.

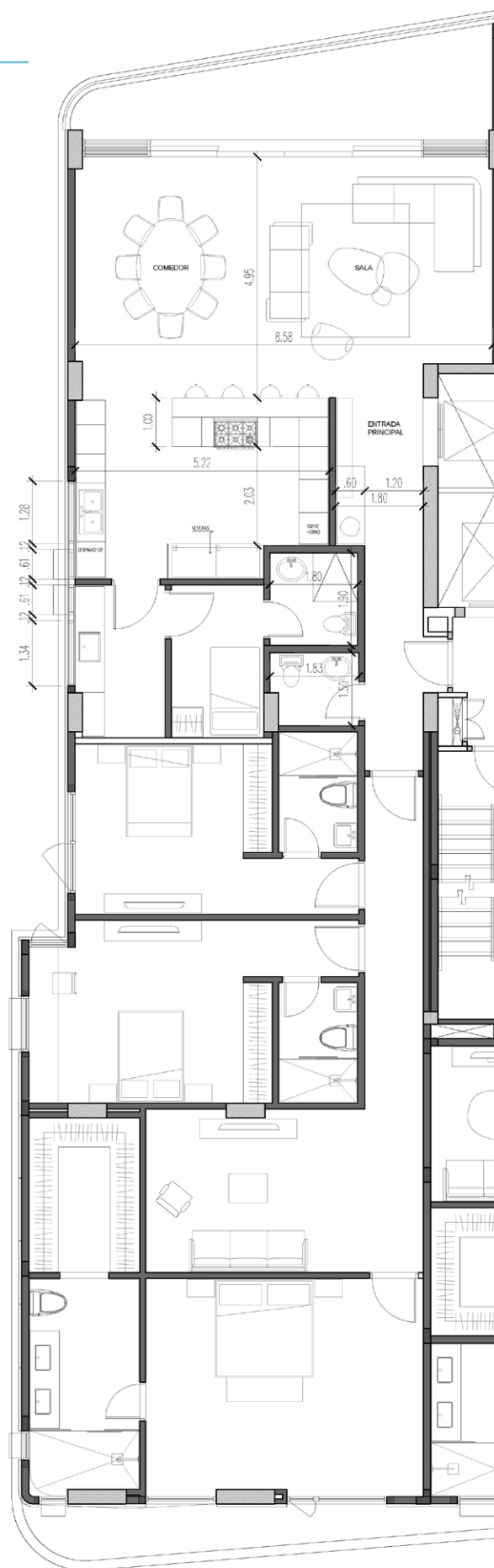
• Open area: 21.88 m² / 235.51 sq. ft.

• **Total area: 263.88 m² / 2,840.38 sq. ft.**

Apt. 1 - s

Opción 2 / Option 2

Cocina abierta / Open kitchen



• Área cerrada: 242 m² / 2,604.87 sq. ft.

• Área abierta: 21.88 m² / 235.51 sq. ft.

• **Área total: 263.88 m² / 2,840.38 sq. ft.**

• Closed area: 242 m² / 2,604.87 sq. ft.

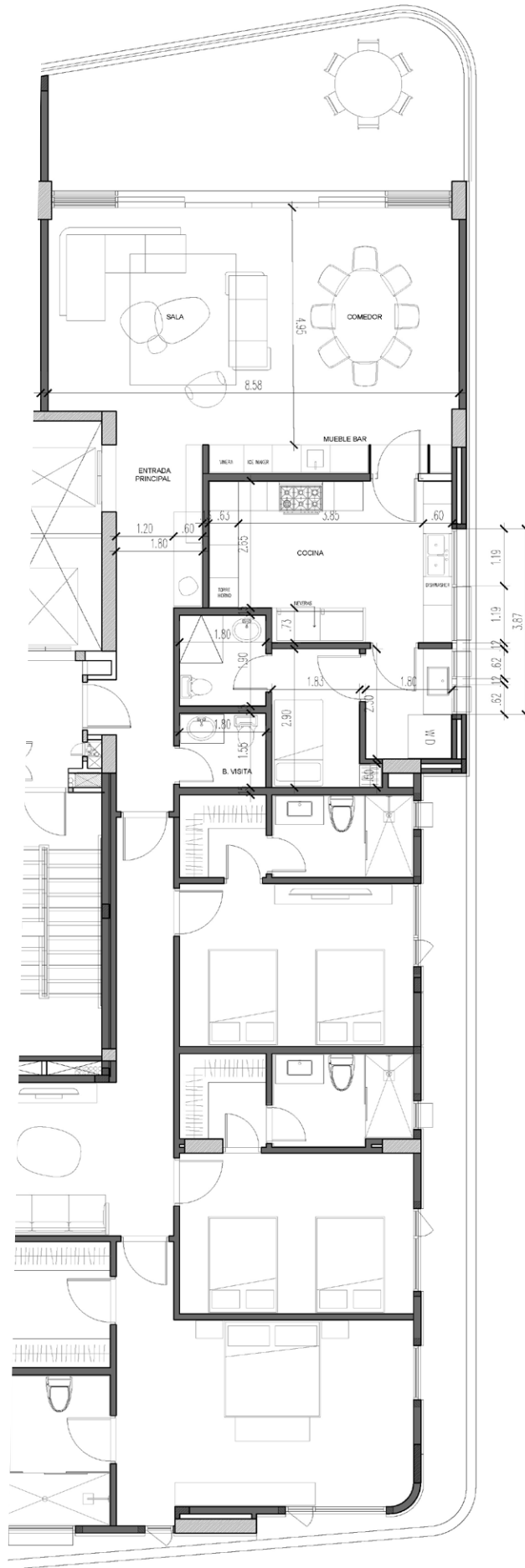
• Open area: 21.88 m² / 235.51 sq. ft.

• **Total area: 263.88 m² / 2,840.38 sq. ft.**

Apt. 1 - N

Opción 1 / Option 1

Cocina cerrada / Closed kitchen



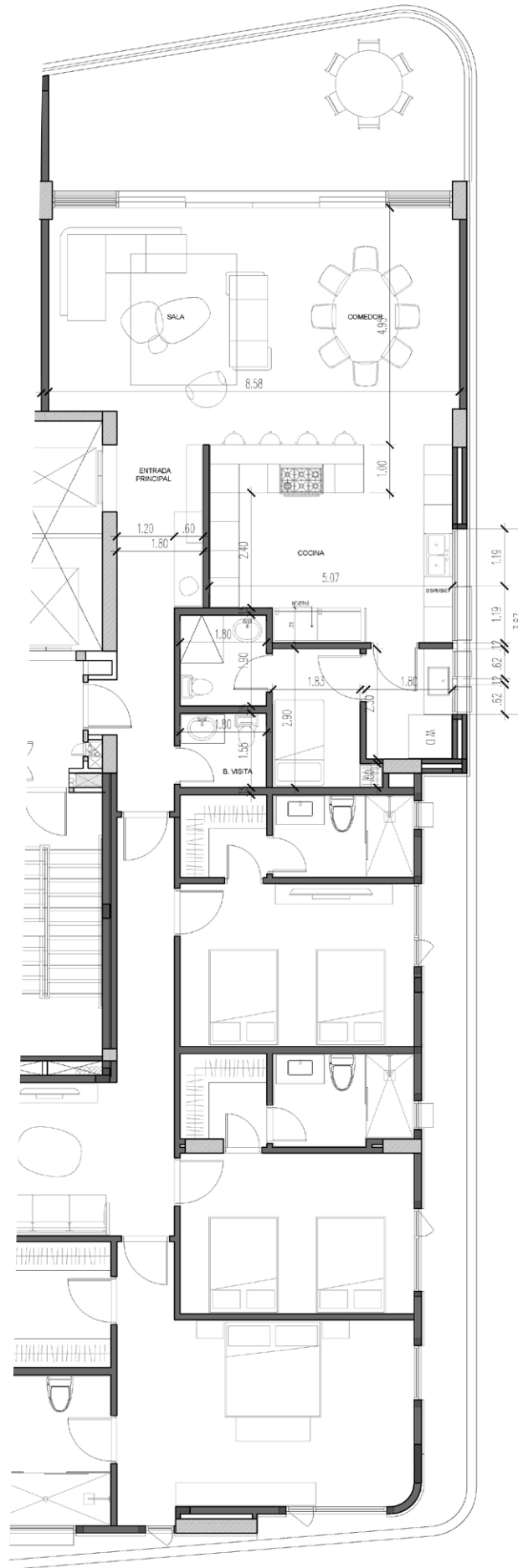
- Área cerrada: 226.60 m² / 2,439.10 sq. ft.
- Área abierta: 15.65 m² / 168.45 sq. ft.
- **Área total: 242.35 m² / 2,608.63 sq. ft.**

- Closed area: 226.60 m² / 2,439.10 sq. ft.
- Open area: 15.65 m² / 168.45 sq. ft.
- **Total area: 242.35 m² / 2,608.63 sq. ft.**

Apt. 1 - N

Opción 2 / Option 2

Cocina abierta / Open kitchen



- Área cerrada: 226.60 m² / 2,439.10 sq. ft.
- Área abierta: 15.65 m² / 168.45 sq. ft.
- **Área total: 242.35 m² / 2,608.63 sq. ft.**

- Closed area: 226.60 m² / 2,439.10 sq. ft.
- Open area: 15.65 m² / 168.45 sq. ft.
- **Total area: 242.35 m² / 2,608.63 sq. ft.**

Atrévete a estar
aquí hoy



Info@oceanreefislands.com
207.8808 / 6218.2020
www.oceanreefislands.com

